



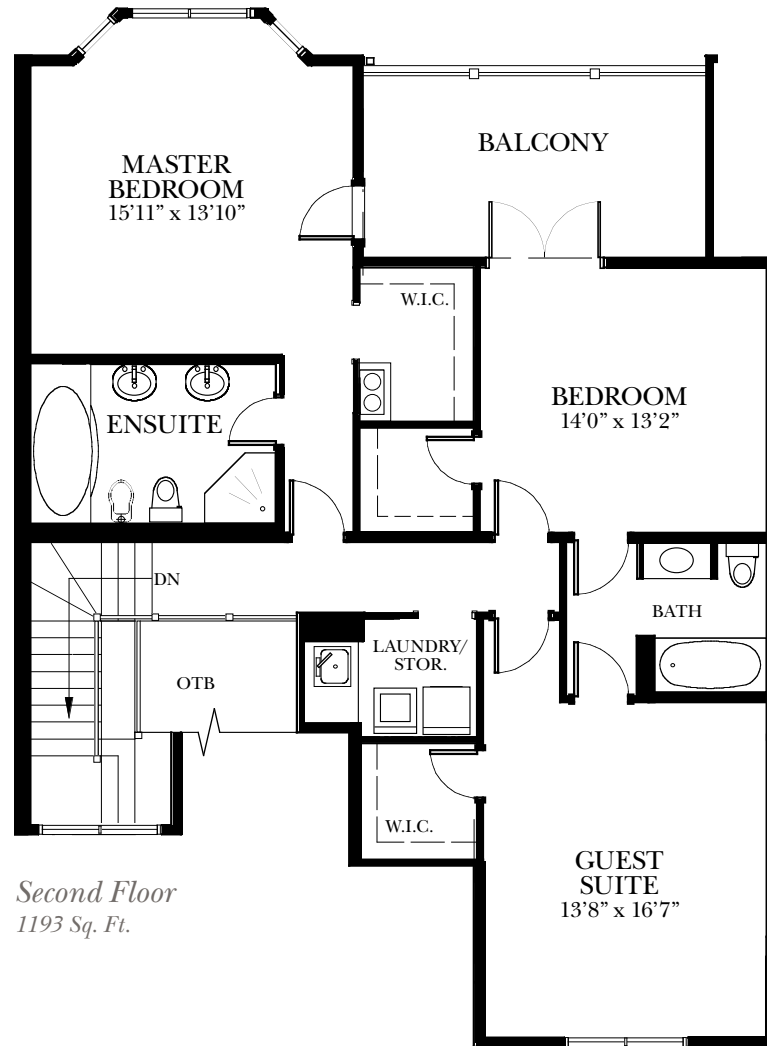
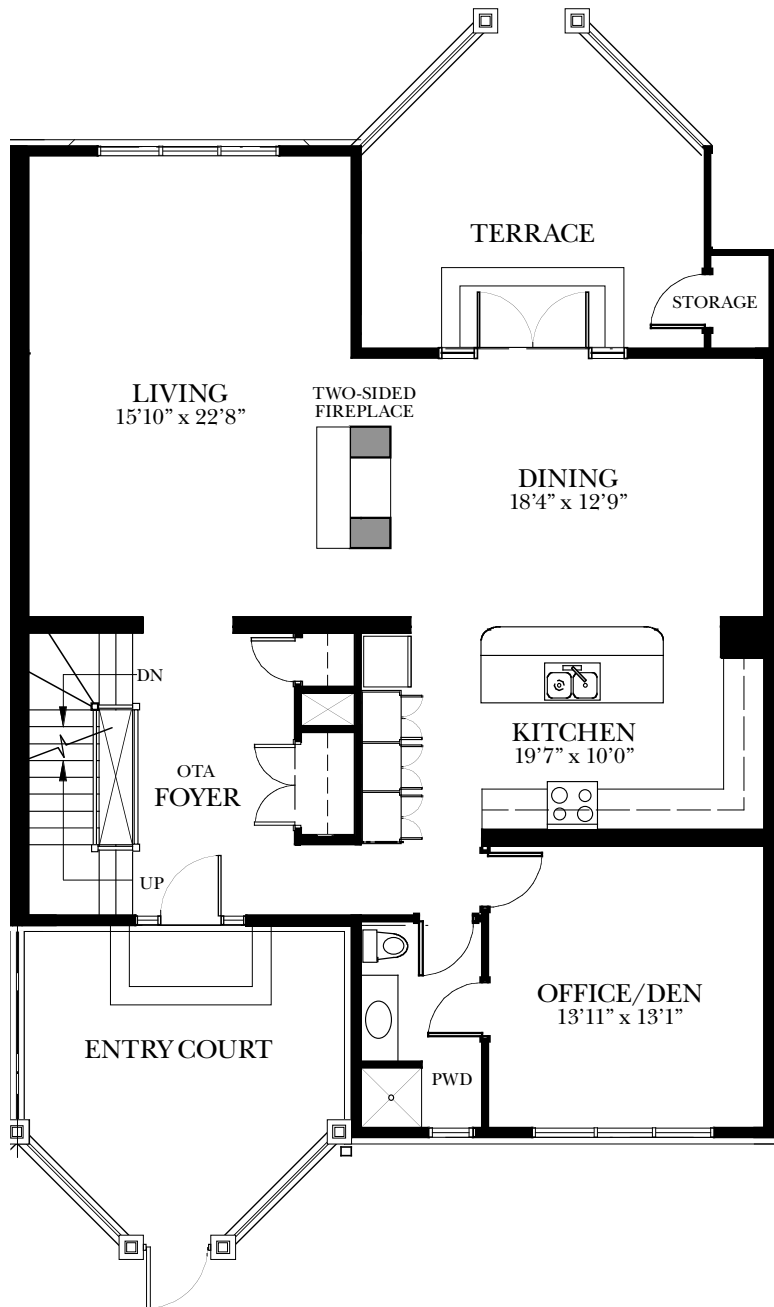
155 Harbourside Dr.

Lot 61 | 4187 sq.ft.

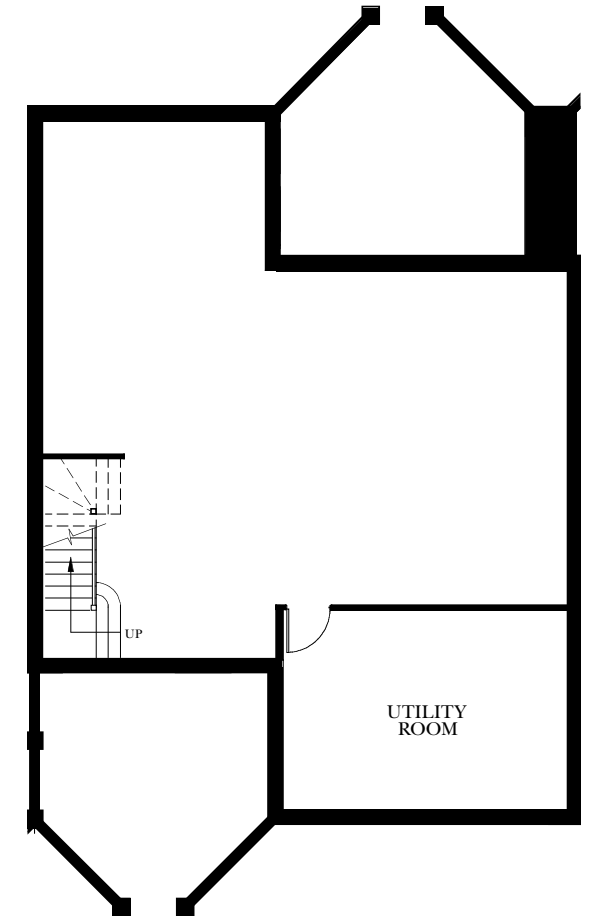
This wide, spacious townhome is designed with Maritime charm and enjoys views to the future vineyard. Luxury finishings and features like a private deck, gourmet kitchen, double-sided fireplace, Spa-like ensuite and second floor laundry.

 **Fox Harb'r Resort**
— Nova Scotia —





Second Floor
1193 Sq. Ft.



Basement
1355 Sq. Ft.

